

ECOLOGICAL AND SLOW FASHION

# NEW WHOLESALE COLLECTION B2B



---

Everyday sustainable fashion







# Overview

---

## INSPIRATION FROM THE 2021 FALESIAS COLLECTION

- Collection by Brand K.F
- Inspiration
- Production Process
- Minimum order 2- models 3-  
Pieces of S / M / L per Model









# FALESIAS 2021 COLLECTION

## About The Inspiration



**The concept of the “Falésias 2021” collection:**

**The inspiration for this collection came from the current environmental and cultural problems, which are occurring during the epicenter of the crisis (pandemic) that we are experiencing now.**

**The Brazilian government, as it ceases to be the center of the media and has seen little of its achievements and demands from citizens, is taking advantage behind the curtains of the pandemic (COVID19), to change laws, items and clauses that harm Indians and the entire environment, fauna and flora, with deforestation or exploitation (Brumadinho), and indigenous genocide, such as invasion of isolated tribes, indoctrinating the natives, this generates loss of cultural identity.**

**K.F brings up this problematic question facing by the current world situation . "what is the importance of preserving the Amazon, and the Brazilian indigenous cultural traditions?".**

**Faced with the problems presented, KF focused on the creation of a collection that portrays elements of Brazilian indigenous culture, also the biodiversity of the Amazon, with the aim of turning the eyes of the world and national media and all those involved, to observe the size of the problem, being mentioned as chiefly responsible your Excellency, President Jair Bolsonaro, the Ministry of the Environment above all in the eyes of Ricardo Salles Minister of the Environment, also the Ministry of Culture and mainly the citizen who elects by vote, the relevance of preserving biodiversity for not only human survival, but for all living beings that inhabit it because we are all interconnected and depend on this system for LIFE to act.**

**We envision that KF BRAND, has always had the principles of preserving the environment through choices of materials, reusable, recyclable, with a minimum of aggression to the environment, thus prioritizing local labor, with 100% national production , not having an industrial system in its production, but humanized and valuing the human being as the main basis for an eco sustainable production development, thus making each human unique.**

**We conclude that “Being ecological is being economical, it is the key to a future that lies on a tightrope**



**Product To Ready Deliver**





### **Girassol Short Dress**

**K.F Proposes pieces with timeless models, noble Ecosimple fabrics, snow white color with crochet embroidered sunflowers. Straight V-neck design.  
Size S / M / L**

**Value: € 549.99**

#### **DESCRIPTION:**

### **Girassol Short Dress**

**Sand color, snow white color with sunflowers embroidered in crochet, straight modeling. Elegant style, the clothes are made in the Slow Fashion model.**

- Standard size with regular modeling;**
- Wash on the hand**
- Ecological fabric**

**Fabric: Ecosimple**

**Composition: 100% cotton**

**Color: Snow White with Yellow sunflowers**

**Brand: K.F KelFerey.**





## **Toper**

**K.F Proposes pieces with timeless models, noble fabrics  
Ecosimple, white, Elegant female modeling.**

**Size S / M / L**

**Value: € 176.99**

### **DESCRIPTION:**

#### **Toper**

**With elegant style, the clothes are made in the Slow  
Fashion type and standard modeling piece.**

- Standard size with regular modeling;**
- Wash the hand;**
- Ecological fabric.**

**Fabric: Ecosimple;  
Composition: 100% cotton  
Color white  
Brand: K.F KelFerey.**





### **Daisies Jacket**

**K.F Proposes pieces with timeless models, noble fabrics Ecosimple,  
Blue Jeans, embroidered in crochet in white, green and brown colors  
Ageless, wide and comfortable modeling.**

**Size S / M / L**

**Value: € 399.99**

#### **DESCRIPTION:**

##### **Jacket set**

**Jacket with front pockets with crochet embroidery,  
Blue jeans color, embroidered in white and green sports model in  
crochet with elastic cuff, Gender, comfortable.**

**jogge pants with elastic in quote and bars**

**With sporty style, the clothes are made in the Slow Fashion model.**

- Standard size with regular modeling.**
- Wash your hand.**
- Ecological fabric.**

**Fabric: Ecosimple.**

**Composition: 100% cotton**

**Color: Jeanse Blue, White and Brown**

**Brand: K.F KelFerey.**





## **Jacket Flowers**

**K.F Proposes pieces with timeless models, noble fabrics Ecosimple, Pink and Orange, Embroidery, crochet red roses, Sports modeling, elegant and oversized.**

**Size S / M / L**

**Value: € 399.99**

### **DESCRIPTION**

#### **Jacket Flowers**

**Pink and orange color with crochet embroidery, red roses, oversized sports modeling.  
the clothes are made in the Slow Fashion model.**

- Standard size with regular modeling;**
- Wash the hands;**
- Ecological fabric.**

**Fabric: Ecosimple;  
Composition: 100% cotton  
Color: Pink, Orange and Pink;  
Brand: K.F KelFerey.**





# *Production Process*



**1 step: Raw material and technique**

**Selection of 100% Ecological Fabric,  
100% Organic Cotton  
Finishing and embroidery  
developed 100% by Hand**



**2 step: inspiration and business transformation**

**Collection's Inspiration  
Brazilian Indigenous Peoples,  
reinterpretation of the most common  
clothing for Indians, petticoat type, belts  
and accessories made of olive bark and  
seeds, bird feathers and tree bark shaped  
like a fringe**



**3 step: Raw material wealth,  
and transformation of textile  
category, different weights**

**100 cotton fabrics, Maquinetado  
fabric and Linen**



## Red Roses Pants

K.F proposes pieces with timeless models and noble Ecosimple fabrics, in white () color embroidered with red crochet flowers, modeling female pantaloons with standard waist.

Size S / M / L

Value: € 296.99

### DESCRIPTION:

#### Red Roses Pants

Standard Waist Women's Pants. White color embroidered with red crochet flowers,

The pants are made in the Slow Fashion type, a wide modeling piece, with a waist, front pockets, crochet details on the sides, elegant cut, finish and front closure.

- Standard size with regular modeling
- Wash on the hand
- Ecological fabric

Fabric: Ecosimple

Composition: 100% cotton

Color:

Brand: K.F KelFerey.





### **Heron Pants**

**K.F proposes pieces with timeless models and noble Ecosimple fabrics,  
white embroidered with crochet patterns,  
pants Heron,  
high waisted female tailoring and side cut.  
Size: S / M / L**

**Value: € 276.99**

### **DESCRIPTION:**

#### **Heron Pants**

**High Waist Female Pants. White embroidered with crochet spinning.  
The pants are made in a Slow Fashion type, a straight modeling piece,  
with high waist, front pockets, crochet details on the side, straight fit,  
finish and front closure.**

- Standard size with regular modeling;**
- Wash on the hand;**
- Ecological fabric.**

**Fabric: Ecosimple;  
Composition: 100% cotton  
Color: white with yellow;  
Brand: K.F KelFerey.**





## **The Sunflowers Blazer**

**K.F Proposes pieces with timeless models, noble Ecosimple fabrics, white color with yellow crochet flowers embroidery, oversized tailoring modeling.**

**Size S / M / L**

**Value: € 598.99**

### **DESCRIPTION:**

#### **The Sunflowers Blazer**

**White color with yellow crochet flower embroidery, oversized tailoring modeling.**

**Elegant style, the clothes are made in the Slow Fashion model.**

- Standard size with regular modeling**
- Wash on the hand**
- Ecological fabric.**

**Fabric: Ecosimple**

**Composition: 100% cotton**

**Color: White with yellow sunflowers**

**Brand: K.F KelFerey.**





## **India Guerreira Medium Dress**

**K.F Proposes pieces with timeless models, noble Ecosimple fabrics, sand color with golden stripes and fringes on the bar, modeling with script, shoulders and slits around.**

**Size S / M / L**

**Value: € 559.99**

### **DESCRIPTION:**

**India Guerreira Medium Dress**

**Sand color with golden stripes.**

**Elegant style, the clothes are made in the Slow Fashion model.**

- Standard size with regular modeling;**
- Wash on the hand;**
- Ecological fabric;**

**Fabric: Ecosimple;**

**Composition: 86% cotton 14% plastic;**

**Color: Sand with Golden Stripes;**

**Brand: K.F KelFerey.**





### **Kayapó Dress**

**K.F Proposes pieces with timeless models, noble Ecosimple tapestry fabrics, blue, gray and white color with fringe tailoring modeling.**

**Size S / M / L**

**In stock, size L / 40**

**For orders of other sizes, minimum of 45/70 working days after purchase.**

**Value: € 498.99**

#### **DESCRIPTION:**

##### **Kayapó Dress**

**Blue, gray and White color, and very wide tailoring. Elegant style, the clothes are made in the Slow Fashion model.**

- Standard size with regular modeling;**
- Wash on the hand;**
- Ecological fabric.**

**Fabric: Ecosimple;  
Composition: 86% cotton 14% plastic;  
Color: Blue, Gray and White;  
Brand: K.F KelFerey.**





## **Straight Skirt**

**K.F proposes pieces with timeless models made of noble Ecosimple fabric, Sand color streaked purple pattern fringes on the bars.**

**Elegant modeling with side zipper and frontal fringe.**

**Size S / M / L**

**Value: € 276.99**

### **DESCRIPTION:**

#### **Straight Skirt**

**Elegant style, the clothes are made in the Slow Fashion type, a standard modeling piece, with frontal fringe, comfortable and elegant cut.**

- Standard size with regular modeling;**
- Wash on the hand;**
- Ecological fabric.**

**Fabric: Ecosimple;**

**Composition: 86% cotton 14% plastic;**

**Color: Sand color streaked purple;**

**Brand: K.F KelFerey.**





**Long Pataxò Dress**  
**K.F Proposes pieces with timeless models, noble Ecosimple fabrics,**  
**Beige and stripe background and brown fringe, feminine modeling**  
**and wide and comfortable.**

**Size S / M / L**

**value € 1.168,53**

**white stripes**

**DESCRIPTION:**

**Long Pataxó Dress**

**Purple Checkered, also application of Natural Fringe, wide and**  
**comfortable modeling.**

**With elegant style, the clothes are made in the Slow Fashion**  
**model.**

- Standard size with regular modeling;
- Wash the hand;
- Ecological fabric.

**Fabric: Ecosimple;**

**Composition: 1000% cotton**

**Color: Beige and stripe background and brown fringe**

**Brand: K.F KelFerey.**





### **Iracema Short Dress**

**K.F Proposes pieces with timeless models, noble Ecosimple tapestry fabrics, pink color with white fringes, one large shoulder modeling.**

**Size S / M / L**

**In stock, size M / 38**

**For orders of other sizes, minimum of 45/70 working days after purchase.**

**Value: € 559.99**

#### **DESCRIPTION:**

### **Iracema Short Dress**

**Pink with White fringes and one large shoulder. Elegant style, the clothes are made in the Slow Fashion model.**

- Standard size with regular modeling;**
- Wash on the hand;**
- Ecological fabric;**

**Fabric: Ecosimple;**  
**Composition: 86% cotton 14% plastic;**  
**Color: Pink with White Fringes;**  
**Brand: K.F KelFerey.**





## **Garden Dress - with Embroidery**

### **Garden Dress**

**KF Proposes pieces with timeless modeling,  
in flat fabrics,  
in the color Orange and Pink bb.**

**Models of Renaissance tailoring, with light puffer sleeve.**

**Value: € 559.99**

**Available in size: P/M/G**

**Elegant style, Piece produced in slow fashion model.  
Standard size with regular modeling.**

**Hand wash.**

**Ecological and recycled fabric.**

**Composition: 89% cotton 11% polyester.**

**Color: orange and pink bb.**

**Brand: K.F KelFerey.**





### **Tope Hopefully Fall**

**K.F Proposes pieces with timeless models made of noble Ecosimple fabric, striped pattern purple and sand bottom color, an elegant modeling with side zipper and fringe on the back.**

**Size S / M / L**

**Value: € 246.99**

#### **DESCRIPTION:**

### **Tope Hopefully Fall**

**Elegant style, the clothes are made in the Slow Fashion type, a standard modeling piece, with a fringe on the back, comfortable and elegant cut.**

- Standard size with regular modeling;**
- Wash on the hand;**
- Ecological fabric;**

**Fabric: Ecosimple;**

**Composition: 86% cotton 14% plastic;**

**Color: Beige background and purple stripe**

**Brand: K.F KelFerey.**









### **Long Pataxò Dress**

**K.F Proposes pieces with timeless models, noble Ecosimple fabrics, Purple Checkered, feminine modeling and wide and comfortable.**

**Size S / M / L**

**Value: € 499.99**

#### **DESCRIPTION:**

### **Long Pataxó Dress**

**Purple Checkered, wide and comfortable modeling. With elegant style, the clothes are made in the Slow Fashion model.**

- Standard size with regular modeling;**
- Wash the hand;**
- Ecological fabric.**

**Fabric: Ecosimple;**

**Composition: 1000% cotton**

**Color: Beige and stripe background and brown**

**Brand: K.F KelFerey.**





## **Renascer Dress**

**A beautiful mysia dress elegant and feminine, emblazoned in brown stripes**

**elegant modeling.  
Value: € 499.99**

**available on 38/40/42/44**

**hand wash**

**Ecological and recyclable fabric warranty**

**: 100% Organic Cotton**

**SLOW FASHION**

- Standard size with regular modeling;**
- Wash the hand;**
- Ecological fabric.**

**Fabric: Ecosimple;  
Composition: 1000% cotton  
Color: white stripes  
Brand: K.F Kel Ferey.**





## **Overcoat**

**K.F Proposes pieces with timeless models, noble tapestry fabrics Ecosimple, brown color tailoring, elegant.**

**Size S / M / L**

**Value: € 799.99**

### **DESCRIPTION:**

#### **Overcoat**

**Brown color, without tailoring modeling.  
Elegant style, the clothes are made in the Slow  
Fashion type, standard modeling piece.**

- Standard size with regular modeling;**
- Wash on the hand;**
- Ecological fabric.**

**Fabric: Ecosimple;  
Composition: 86% cotton 14% plastic;  
Color: Brown;  
Brand: K.F KelFerey.**





### **Overcoat**

**K.F Proposes pieces with timeless models, noble tapestry fabrics Ecosimple, brown color tailoring, elegant.**

**Size S / M / L**

**In stock, size X L / 44**

**For orders of other sizes, minimum 45/70 working days after purchase.**

**Value: € 799.99**

### **DESCRIPTION:**

### **Overcoat**

**Brown color, without tailoring modeling.  
Elegant style, the clothes are made in the Slow Fashion type, standard modeling piece.**

- Standard size with regular modeling;**
- Wash on the hand;**
- Ecological fabric.**

**Fabric: Ecosimple;  
Composition: 86% cotton 14% plastic;  
Color: Brown;  
Brand: K.F KelFerey.**





### **Carajás Short Dress**

**K.F Proposes pieces with timeless models, noble Ecosimple tapestry fabrics, brown color, with side pockets, modeling with strap and front buttons with X neckline.**

**Size S / M / L**

**In stock, size S / 36**

**For orders of other sizes, minimum of 45/60 working days after purchase.**

**Value: € 549.99**

#### **DESCRIPTION:**

#### **Carajás Short Dress**

**Brown color with side pockets, modeling with strap and front buttons with X neckline. Elegant style, the clothes are made in the Slow Fashion model.**

- Standard size with regular modeling;**
- Wash on the hand;**
- Ecological fabric.**

**Fabric: Ecosimple;**

**Composition: 86% cotton 14% plastic;**

**Color: brown**

**Brand: K.F KelFerey.**





## **Tailoring Pants**

**K.F Proposes pieces with timed patterns, Ecosimple tailoring pants fabrics, in elegant, Brown background and white stripe and standard waist.**

**Size S / M / L**

**Value: € 399.99**

### **DESCRIPTION:**

#### **Tailoring Pants**

**Tailoring pants, Standard Waist. White color, no gender less pattern waist.**

**The pieces are produced in the Slow Fashion system, stripped fit, waistband finish and zipper**

**Standard size with regular modeling;**

**- Wash in hand;**

**Fabric: Ecosimple;Composition: 100% cotton**

**Color: Brown background and white stripe**

**Brand: Kel Ferey K.F.**





## Men's Shirt

**K.F Proposes parts with timeless models, ecosimple recyclable and organic fabrics, sand color, long sleeve modeling.**

**Size S / M / L**

**In stock**

**Value: € 399,99**

### DESCRIPTION:

#### Men's shirt

**Sand color, long sleeve modeling.**

**Elegant style, the clothes are made in the Slow Fashion model, standard modeling piece.**

-

**Fabric: Ecosimple;  
Composition: 100% cotton  
Color: Sand;  
Brand: K.F KelFerey.**





### **Men's shirt**

**K.F Proposes pieces with timeless models, ecosimple recyclable and organic fabrics, Background sand and purple stripe long sleeve modeling.**

**Size S / M / L**

**In stock**

**Value: € 399,99**

### **DESCRIPTION:**

#### **Men's shirt**

**Sand color and wine stripes, long sleeve modeling. Elegant style, the clothes are made in the Slow Fashion model, standard modeling piece.**

-

**Fabric: Ecosimple;**

**Composition: 100% cotton**

**Color: Background sand and purple stripe**

**Brand: KelFerey K.F.**





**Men's shirt**  
**K.F Proposes pieces with timeless models, noble Ecosimple  
tapestry fabrics,**  
**Color Sand, short sleeve male modeling.**  
**Size S / M / L**

**Value: € 399.99**

**DESCRIPTION:**  
**Men's shirt**

**Color Sand, male modeling with short sleeve.**  
**Elegant style, the clothes are made in the Slow Fashion**  
**type, standard modeling piece.**

- Standard size with regular modeling;**
- Wash on the hand;**
- Ecological fabric.**

**Fabric: Ecosimple;**  
**Composition:100% cotton**  
**Color: sand and**  
**Brand: K.F KelFerey.**





## **Men's shirt**

**K.F Proposes pieces with timeless models, noble tapestry fabrics Ecosimple, modeling short sleeve in blue color.**

**Size S / M / L**

**Value: € 299.99**

### **DESCRIPTION:**

#### **Men's shirt**

**Sand colored, short sleeve modeling.  
With elegant style, the clothes are made in the Slow  
Fashion type, a standard modeling piece.**

- Standard size with regular modeling;**
- Wash the hand;**
- Ecological fabric.**

**Fabric: Ecosimple;  
Composition: 86% cotton 14% plastic;  
Color: Blue  
Brand: KelFerey.**





## **Female Shirt**

**K.F Proposes pieces with timeless models, noble Ecosimple tapestry fabrics, blue color machined for femele long sleeve modeling.**

**Size S / M / L**

**Value; € 299.99**

### **DESCRIPTION:**

#### **Female Shirt**

**Blue color, for femele long sleeve**

**Elegant style, the clothes are made in the Slow Fashion type, standard modeling piece.**

- Standard size with regular modeling;**
- Wash on the hand;**
- Ecological fabric;**

**Fabric: Ecosimple;**

**Composition: 100% cotton**

**Color: Blue jeans**

**Brand: K.F KelFerey.**





## **Attoo pants**

**K.F proposes pieces with timeless models, noble Ecosimple fabric, printed blue color, masculine modeling of standard waistband.**

**Ready for delivery in size M / 38, delivery in 30 week days.**

**For orders of other sizes, minimum of 45/70 working days after purchase.**

**Value: € 345.99**

### **DESCRIPTION:**

#### **Attoo pants**

**Standard Waist Pants, noble Ecosimple denim fabric, machined style in blue print for men, tailoring modeling.**

**The pants are made in a Slow Fashion type, a straight modeling piece, with a standard waist, elegant fit, tailored waistband and Italian hem with front pockets.**

- Standard size with regular modeling;**
- Wash on the hand;**
- Ecological fabric;**

**Fabric: Ecosimple;**

**Composition: 86% cotton 14% pet;**

**Color: Blue Tatoo;**

**Brand: K.F KelFerey.**





## Jogger Pants

K.F proposes pieces with timeless models of noble Ecosimple fabrics on jeans style, blue jeans color without gender, sports modeling and standard waist. after purchase.

Value: € 349.99

### DESCRIPTION:

#### Jogger Pants

Standard Waist Pants, noble eco-style denim fabric, in blue jeans, without gender with sports modeling. The trousers are made in a Slow Fashion type, Jogger modeling piece, have a standard waist, stripped fit, elasticized waist and bars finish.

- Standard size with regular modeling;
- Wash on the hand;
- Ecological fabric.

Fabric: Ecosimple;  
Composition: 86% cotton 14% plastic;  
Color: Blue Jeans;  
Brand: K.F KelFerey.





## **Jogger Pants**

**K.F proposes pieces with timeless models made of noble Ecosimple fabrics, Jogger pants with elastic in the waist and ankle, two colors pink and orange, sports modeling.**

**Ready for delivery in one-size-fits-all delivery.**

**For orders of other sizes, minimum 45/60 working days after purchase.**

**Value: € 325.99**

### **DESCRIPTION:**

#### **Jogger Pants**

**Standard Waist Pants, pink and orange colors with sports modeling.**

**The pants are made in the Slow Fashion type, a Jogger model piece, have a standard waist with elastic, and also elastic on the bars in the ankle.**

- Standard size with regular modeling;**
- Wash on the hand;**
- Ecological fabric;**

**Fabric: Ecosimple;  
Composition: 86% cotton 14% plastic;  
Color: Two colors, Pink and Orange;  
Brand: K.F KelFerey.**







**Coleção Sala de Estar X Collab**  
**Sales Up Demand**  
**75 days to Deliver.**



## Saia Midi

value € 1.799,84

**Fabric: Ecosimple;  
Composition: 86% cotton 14% plastic;  
Color: Two colors, Pink and Orange;**

**Brand: K.F Kel Ferey.**





**Toussaint  
Poncho with mini short**

**of contemporary ancestral tailoring, with ecosimple tapestry fabric.**

**Description**

**Poncho with invisibble sleeve . with 2 pairs of ropes from the front and 3 ropes from the back.**

**Value € 2.399,99**

**Fabric: Ecosimple;  
Composition: 86% cotton 14% plastic;  
Color: Two colors cream and Brown;**

**Collab: Woolmay Mayden X K.F Kel Ferey.**





**Kimono Long Dress**  
K.F Proposes pieces with timeless models, noble Ecosimple fabrics, sand color, long sleeves. Traditional Japanese modeling.  
Size S / M / L

**Value: € 499.99**

**DESCRIPTION:**

**Kimono Long Dress**

Sand color, long sleeves, traditional Japanese modeling, wide and comfortable.  
Elegant style, the clothes are made in the Slow Fashion model.

- Standard size with regular modeling;
- Wash on the hand;
- Ecological fabric.

**Fabric: Ecosimple;**  
**Composition: 100% cotton**  
**Color: Sand;**  
**Brand: K.F KelFerey.**





### **Midi Dress Orange Evasê**

**Yakini Set - Hand painted mydi dress with sustainable eco paint  
Fabric: Ecological**

**Value: € 589,00**

**Fabric: Ecosimple;  
Composition: 86% cotton 14% plastic;  
Color: Sand Background With Yellow.**

**Brand: K.F KelFerey.**





## **Blazer Game of the Old**

**Hand-painted Orange Blazer with eco-friendly fabric paint.**

**Value: € 799.99**

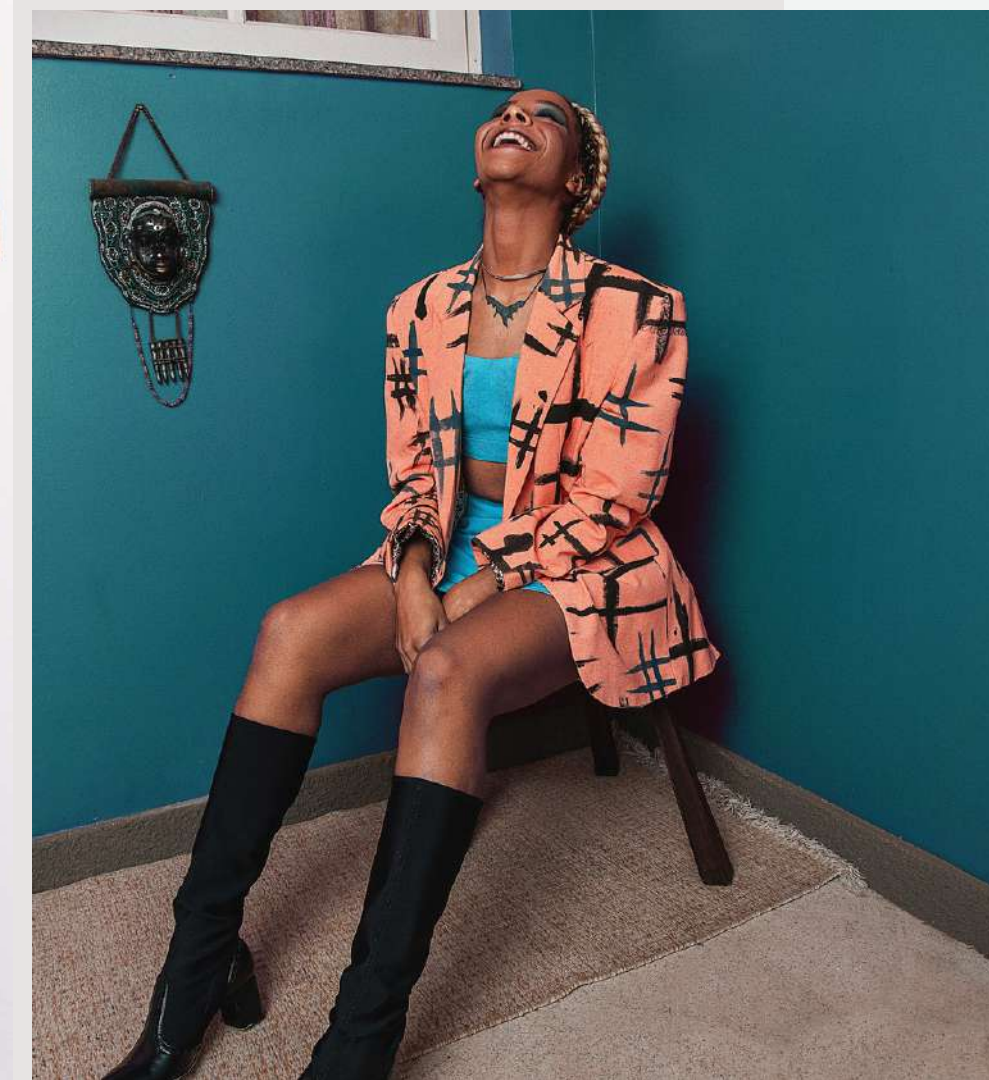
**Hand wash.**

**Ecosimple ecosimple eco-friendly and recycled fabric warranty**

**Composition: 100% cotton.**

**SLOW FASHION**

**Fabric: Ecosimple;  
Composition: 86% cotton 14% plastic;  
Color: Sand Background With Yellow.  
Brand: K.F KelFerey.**





**Poá set, with Mídi new look  
Dior style skirt and top made of ecosimple recyclable tapestry  
fabric.**

**Value: € 1.999.99**

**Fabric: Ecosimple;  
Composition: 86% cotton 14% plastic;  
Color: Two colors, Pink and Orange;**

**Brand: K.F KelFerey.**





## **Renascer Dress**

**A beautiful mysia dress elegant and feminine, emblazoned in brown stripes**

**elegant modeling.**

**available on 38/40/42/44**

**value; € 189,99**

**hand wash**

**Ecological and recyclable fabric warranty**

**: 100% Organic Cotton**

**SLOW FASHION**

- Standard size with regular modeling;**
- Wash the hand;**
- Ecological fabric.**

**Fabric: Ecosimple;**  
**Composition: 1000% cotton**  
**Color: white stripes**  
**Brand: K.F Kel Ferey.**





### **Coat Henri**

**Coat : Fabric Tapestry eco simple**

**Description:**

**Tailoring Piece turtleneck with 3 pairs of Plastic buttons and 3 buttons in each hand with 3 pairs pockets ( 2 pairs of them useless ) lined with satin**

**Composition: 86% cotton 14% plastic;**

**Color: brown**

**Collab: Woolmay Mayden X K.F Kel Ferey.**





### **Overcoat Bicolor green/blue**

**Bust: 92 cm; waist: 86 cm; hip: 96 cm; cava: 48 cm; Comp.  
Sleeve: 65 cm; Neckline: 40 cm; handle: 25 cm.**

**Value; € 1.186,00**

### **Pontalona Pants**

**Waist: 84 cm; Hip: 108 cm; hook: 40 cm; Comp. Total: 118  
cm; between legs: 82 cm.  
Brand: K.F Kel Ferey.**





### **Overcoat Bicolor green/blue**

**Bust: 92 cm; waist: 86 cm; hip: 96 cm; cava: 48 cm; Comp.  
Sleeve: 65 cm; Neckline: 40 cm; handle: 25 cm.**

**Value; € 1.186,00**

### **Pontalona Pants**

**Waist: 84 cm; Hip: 108 cm; hook: 40 cm; Comp. Total: 118  
cm; between legs: 82 cm.  
Brand: K.F Kel Ferey.**





**Top + Calça pantalona em tecido de tapeçaria com estampa de listra -**

**Tecido: Ecológico - Tamanho: 38/40/42/44**

**value € 799,84**

**Fabric: Ecosimple;  
Composition: 86% cotton 14% plastic;  
Color: Two colors, Pink and Orange;**

**Brand: K.F Kel Ferey.**





**White Jean Set.**

**Ecological and recycled fabric guarantee.**

**Value; €1,199,99**

**SLOW FASHION**

**Hand wash.**

**Dimensions:**

**Blazer:**

**Bust: 118 cm; Waist: 104 cm; hip: 122 cm; shoulder:  
14 cm; Cava: 56 cm; Neckline: 44 cm; Comp. Sleeve:  
65 cm; Comp. Total: 80 cm.**

**Pants:**

**Waist: 92 cm; Hip: 108 cm; Hook: 32 cm; Pocket: 18  
cm; Comp. Total: 92 cm; Between Legs: 65 cm.**

**Fabric: Ecosimple;  
Composition: 100% cotton  
Color: Sand;  
Brand: K.F KelFerey.**





**Cocktail Dress- Carmelita Mendes**

**value € 899,84**

**Cocktail Dress- Carmelita Mendes, Mini dress, hand  
painted with ecological paint - Technique: Free hand -  
Modeling: contemporary  
with Trapeado. Size: 36 - Fabric: ecological**

**Fabric: Ecosimple;  
Composition: 86% cotton 14% plastic;  
Color: red with white background, and pink,**

**Brand: K.F Kel Ferey.**





**Hand-graffitied blazer.**

**value; € 960,00**

**Hand wash.**

**Ecological and recycled fabric guarantee.**

**Composition: 100% cotton.**

**SLOW FASHION**





**wash hands**  
**Guaranteed ecological and recycled fabric.**  
**Composition: 100% cotton.**  
**SLOW FASHION**

**Fabric: Ecosimple;**  
**Composition: 86% cotton 14% plastic;**  
**Color: Two colors, Pink and Orange;**

**Brand: K.F Kel Ferey.**





**Saia Midi fêmea**

**value € 799,84**

**Fabric: Ecosimple;  
Composition: 86% cotton 14% plastic;  
Color: Two colors, Pink and Orange;**

**Brand: K.F Kel Ferey.**





**Saia Midi fêmea**

**value € 799,84**

**Fabric: Ecosimple;  
Composition: 86% cotton 14% plastic;  
Color: Two colors, Pink and Orange;**

**Brand: K.F Kel Ferey.**



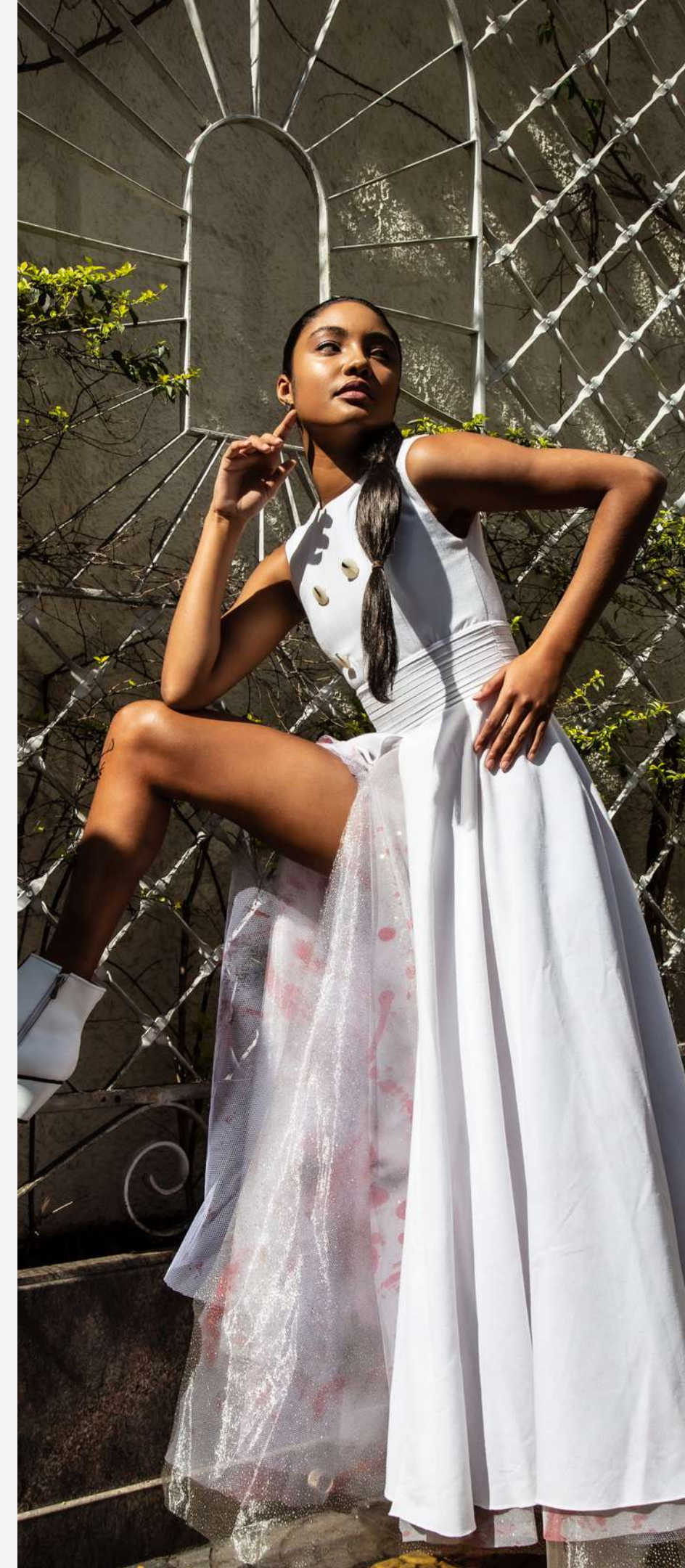


**Catherine**  
**White wedding dress with embroidered collar crochet with 2  
pairs of plastic buttons , hand-made tulle (costumized with  
black , red and gold ink )**

**Value € 2.399,84**

**Fabric: Ecosimple;  
Composition: 100% cotton  
Color: white red and black**

**Collab: Woolmay Mayden X K.F Kel Ferey.**





**Alma**  
**Mini skirt and Jacket Set.**  
**with 2 different fabrics**

**Value € 2.399,84**

**one of them with embroidered crochet lilies flowers with  
pearls all over the chest and also back and the front of  
the skirt .**

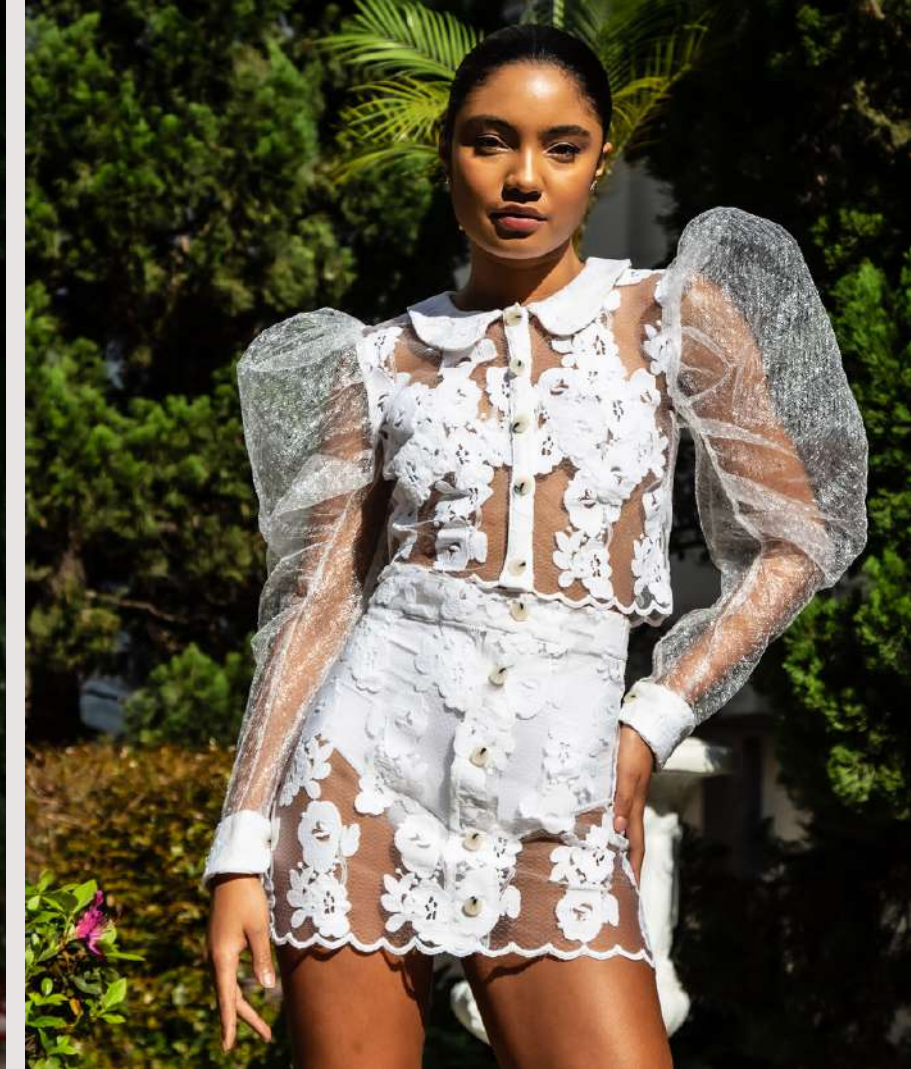
**with wooden buttons all over the hand**

**second piece in lace and embroidered tulle.**

**Composition: 86% cotton 14% plastic;**

**Color: White**

**Collab: Woolmay Mayden X K.F Kel Ferey.**





**Pétion .**

**Fabric from ecosimple  
White shirt with 5 pairs of wooden buttons  
Priest Collar  
White Mini Short**

**Composition: 86% cotton 14% plastic;  
Color: white;**

**Collab : Woolmay mayden K.F Kel Ferey.**





**Jusa Set - Double Gode**  
**New Look skirt with female pence + Smoke tailoring vest**  
**hand painted graffiti style**

**value; 1.099,99**

**Size: 38 - Fabric: Ecological**

**Saia Midi fêmea**

**value; € 1.099,84**

**Fabric: Ecosimple;**  
**Composition: 86% cotton 14% plastic;**  
**Color: Two colors, Pink and Orange;**

**Brand: K.F Kel Ferey.**





**Hand-graffitied Blazer.**

**value € 999,84**

**Hand-graffitied blazer.**

**Hand wash.**

**Ecological and recycled fabric guarantee.**

**SLOW FASHION**

**Fabric: Ecosimple;  
Composition: 86% cotton 14% plastic;  
Color: Two colors, Pink and Orange;**

**Brand: K.F Kel Ferey.**



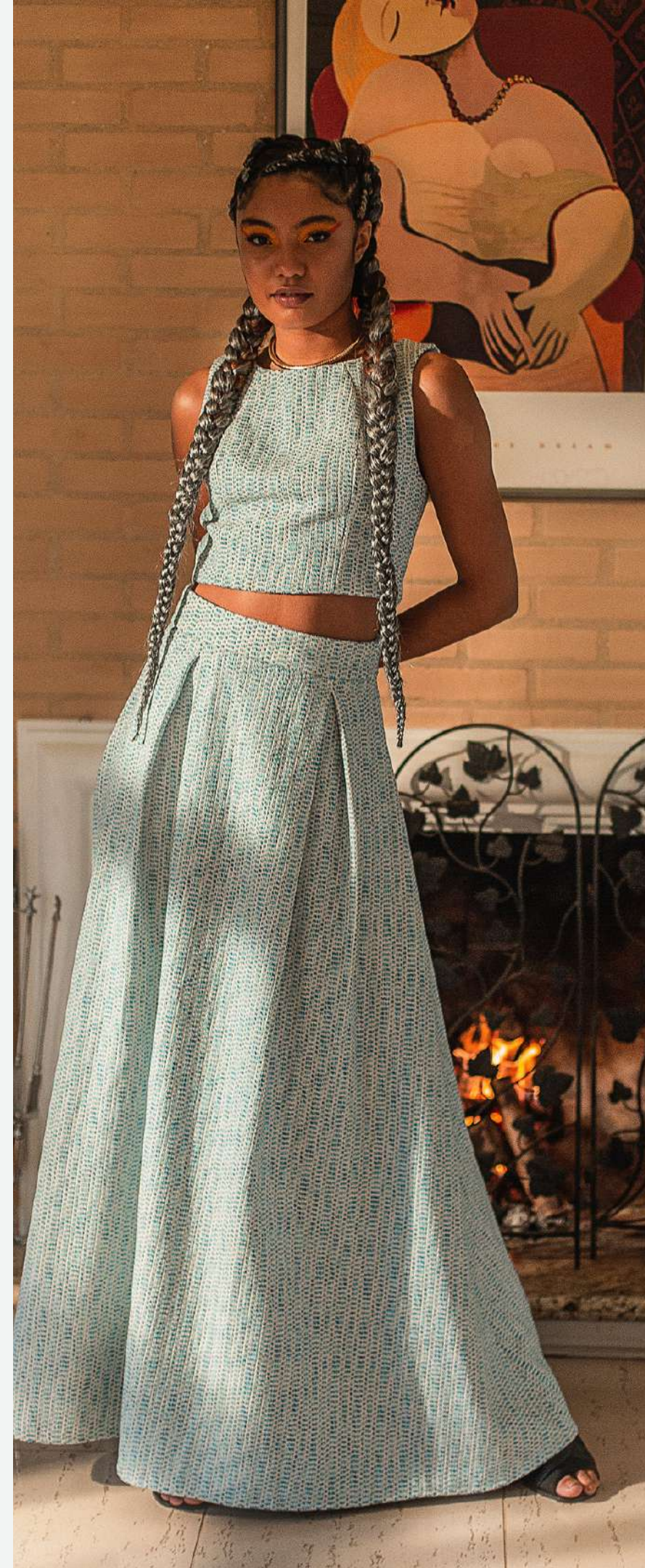


**Set - Long skirt and Tope.  
Ecological Tapestry Fabric, hand wash.**

**value € 1.299,99**

**Fabric: Ecosimple;  
Composition: 86% cotton 14% plastic;  
Color: Two colors, Pink and Orange;**

**Brand: K.F Kel Ferey.**





## **Pantalona Pants**

**Tapestry fabric with striped pattern in two colors, blue and yellow.**

**value; € 7299,99**

**Fabric: Ecosimple;**

**Composition: 86% cotton 14% plastic;**

**Color: Two colors, Pink and Orange;**

**Brand: K.F Kel Ferey.**





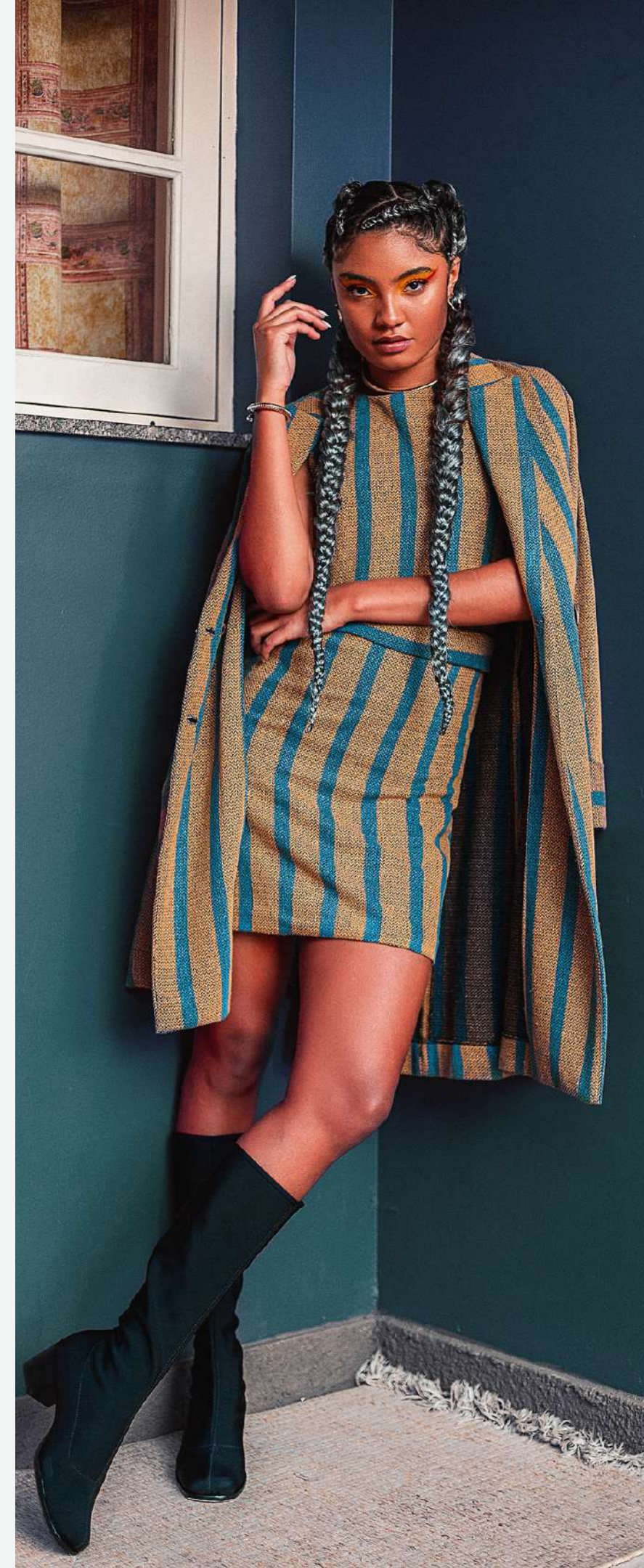
### **Mini Dress Set - Jusa Luiz**

**Vertical striped mini dress in tapestry fabric.**

**value; € 1.799,00**

**Fabric: Ecosimple;  
Composition: 86% cotton 14% plastic;  
Color: Two colors, Pink and Orange;**

**Brand: K.F Kel Ferey.**





**Blazer Jusa.**

**Hand wash.**

**Ecological and recycled fabric guarantee.**

**SLOW FASHION**

**value € 1.099,99**

**Fabric: Ecosimple;  
Composition: 86% cotton 14% plastic;  
Color: Two colors, Pink and Orange;**

**Brand: K.F Kel Ferey.**





# Making Mintmade

THE TEAM  
BEHIND IT ALL



**kel Ferey**  
Founder and CEO



**kel Ferey**  
Head Designer



Site; [kfbranding.com](http://kfbranding.com)



@kelferey @KFbranding



TL: +55 (11) 992391771



Whatsapp: +55 (11) 998579166



E-mail: [kelhorus@hotmail.com](mailto:kelhorus@hotmail.com)



SKU		SKU			
01CPAAREIA		56VESTIDOIRACEMACOMFRANJARE			
02CROLV		57VESTIDOIRACEMACOMFRANJARBB			
03CFANUDE		58VESTIDOGIRASSOLCURTOBRANCOBOR			
04CROMARROM		59VESTIDOCARAJASMARROM			
05CARAAZUL		60VESTIDORENASCERMARROM			
06CPACINZA		61VESTIDORENASCERBRANCO			
07CGCINZA		62CALCAARARALIST			
08JQAZUL		63BERMUDAMALHACINZA			
09JQAZULBB		64CALCASKINER			
10JQROSABICOLOR		65CALCAGIRASSOLBRANCA			
11JQROSABB		66CALCAGIRASSOLBEGE			
12JQBICOLORBORDADO		67CALCAMOLETOMC			
13JQAZULBORDADO		68CALCAMOLETOMB			
14CJROSABB		69CPBRANCA			
15CJAZULBB		70CASACOKIMONOB			
16CJAZUL		71CASACOKIMONOSEMBB			
17CJBICOLOR		72CASACOKIMONOSEMBBEGE			
18CARARAAZUL		73CASACOKIMONOSEMBAREIA			
19CASACOKIMOBORDADOMC	ver	74CASACOKIMONOCOMBORDADOBEGE			
20CASACOOVERCOAT		75CONJUNTOCANCOMFRANJAR			
21CASACOOVERCOATMARROM		76CONJUNTOCANSEMFRANJAR			
22CASACOKIMONOSEMBBORDADO		77CONJUNTOPATAXO			
ver		78CONJUNTOGARÇAACOMB			
23TOPCANSEMFRANJA		79CONJUNTOGARÇACINZACOMB			
24TOPCANCOMFRANJA		80CONJUNTOGARÇABCOMB			
25BLUSAPATAXO		81CONJUNTOGARÇASEMBB			
26TOPGARÇAA		82CONJUNTOGARÇASEMBA			
27TOPGARÇACINZA		83CONJUNTOGARÇASEMBC			
28TOPGARÇABRANCO		84CONJUNTOGARÇASEMBCL			
29TOPGARÇACINZALISTRADA		85CONJUNTOASSAIBICOMB			
30CAMISAPADREBRANCA		86CONJUNTOASSAIAZULBBCOMB			
31CAMISAPADRECINZA		87CONJUNTOASSAIROSABBCOMB			
32CANCOMFRANJAroxa		88CONJUNTOASSAIAZULESCUROCOMB			
33SAIACANMIDISEMFRANJAR		89CONJUNTOASSAIAZULBBSEMB			
34SAIACANMIDICOMFRANJAA		90CONJUNTOASSAIAZULESCUROSEMB			
35SAIACANMIDICOMFRANJAR		91CONJUNTOASSAIBISEMB			
36CALÇAGARÇASEMBORDADOB		92CONJUNTOASSAIROSABBSEMB			
37CALÇAGARÇASEMBORDADOA		93JAQUETAASSAIBB			
38CALÇAGARÇASEMBORDADOC		94JAQUETAASSAIROSABBB			
39CALÇAGARÇASEMBORDADOCL		95JAQUETAASSAIAZULBBB			
40CALÇAGARÇACOMBORDADOB		96JAQUETAASSAIAZULESCUROB			
41CALÇAGARÇACOMBORDADOA		97VESTIDOCARAJASPOA			
42CALÇAGARÇACOMBORDADOC		98VESTIDOTRANCOSOCL			
42CALÇAGARÇACOMBORDADOC		99CALÇAASSAIAZULBBB			
43CALÇADEALFAIATARIA					
44CALÇAPATAXOA					
45VESTIDOTRANCOSOL					
46VESTIDOJARDIMBORDLA					
47VESTIDOJARDIMSEMBORDLA					
48VESTIDOJARDIMSEMBORDROSABB					
49VESTIDOMIDIPATAXOSEMFRANJAA					
50VESTIDOMIDIPATAXOSEMFRANJAC					
51VESTIDOIRACEMALASEMFRANJA					
52VESTIDOIRACEMAIRACEMAROSEMFRANJA					
53VESTIDOINDIAGUERREIRACOMFRANJA					
54VESTIDOPATAXOCOMFRANJA					



- Girassol Short Dress: € 549.99
- Toper; € 176.99
- Daisies Jacket; € 399.99
- Heron Pants;€ 276.99
- Red Roses Pants; € 296.99
- The Sunflowers Blazer; € 598.99
- Kayapó Dress; € 598.99
- India Guerreira Medium Dress € 559.99
- Straight Skirt € 276.99
- Long Pataxò Dress € 1.168,53
- Iracema Short Dress € 559.99
- Garden Dress - with Embroidery Value: € 559.99
- Tope Hopefully Fall € 246.99
- Long Pataxò Dress € 499.99
- Carajás Short Dress € 549.99
- Renascer Dress ; Value: € 499.99
- Tailoring Pants € 345.99
- Men's Shirt € 399,99
- Men's shirt short sleeve
- ; Attoo pants € 345.99
- Jogger Pants € 349.99
- 



Site; [kfbranding.com](https://kfbranding.com)  
 @kelferey @KFbranding  
 TL: +55 (11) 992391771  
 Whatsapp: +55 (11) 998579166  
 E-mail: [kelhorus@hotmail.com](mailto:kelhorus@hotmail.com)

kel Ferey  
 Founder and CEO